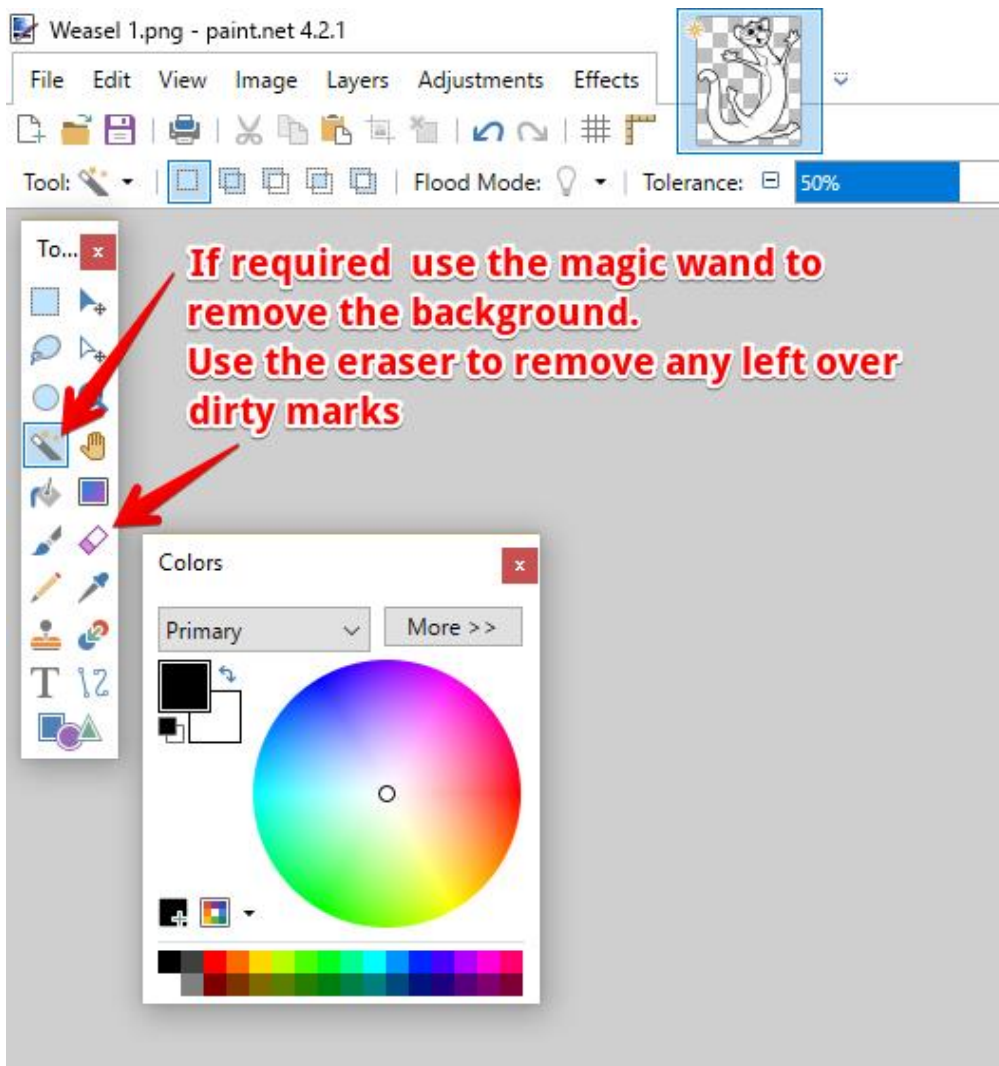


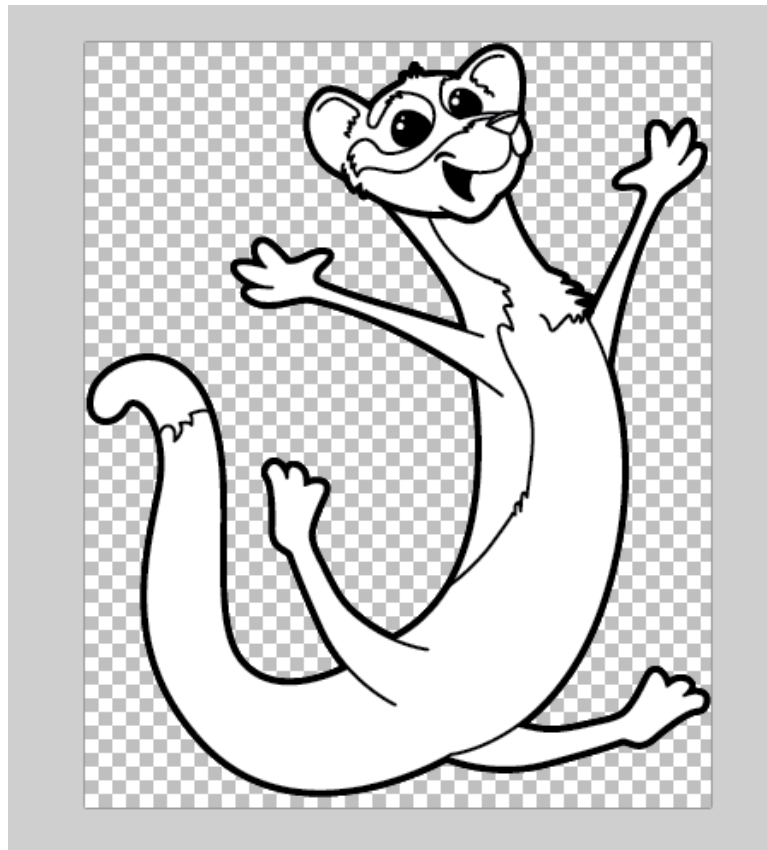
How to colour your drawings using Paint.NET

If you don't have Paint.net Click to [Download](#)

Important - Make a Copy, do not work on the original.

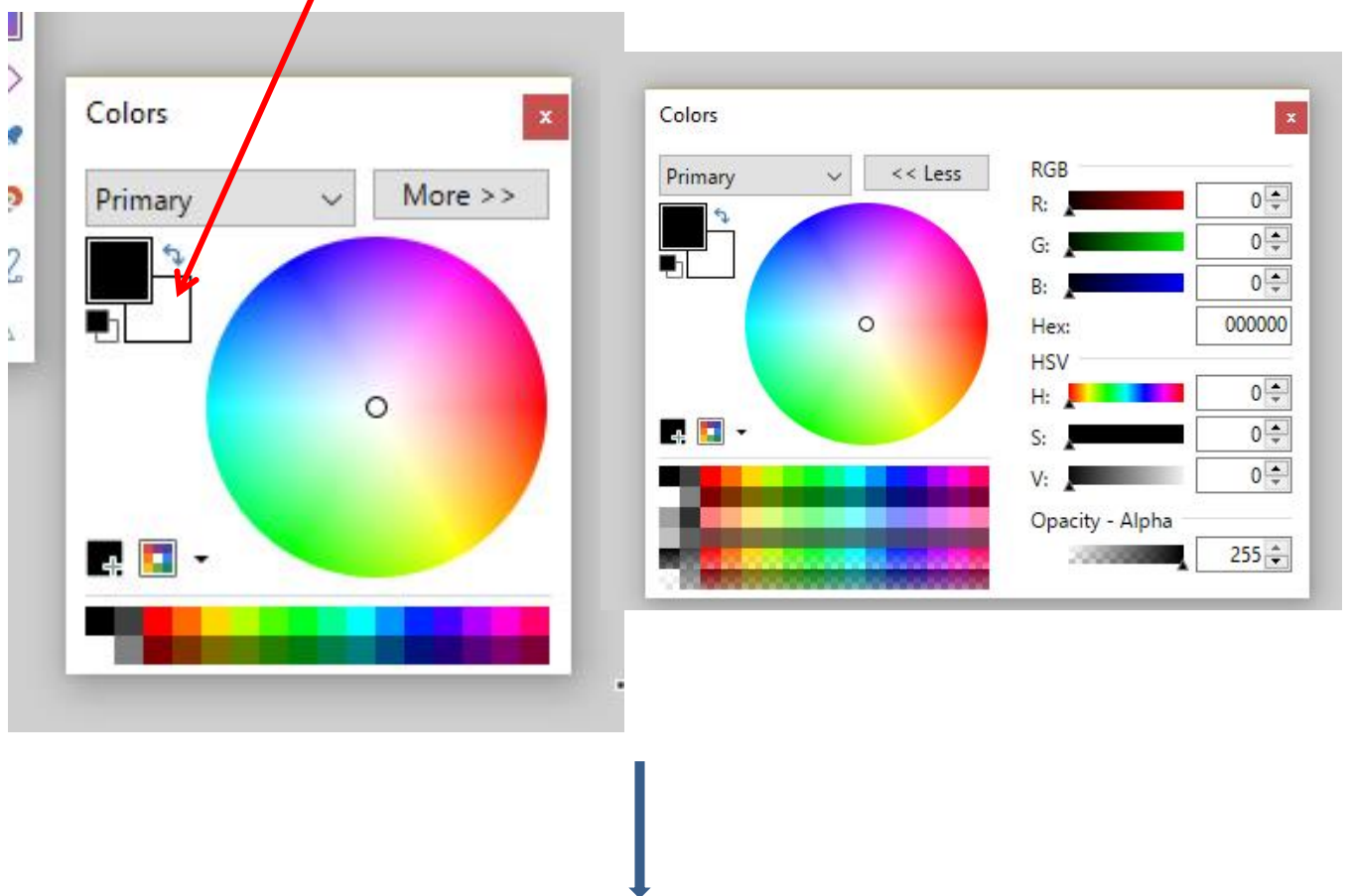
Every line on your drawing should be joined with no gaps. If there are gaps draw them in otherwise your drawing will be flood filled with the same colour!



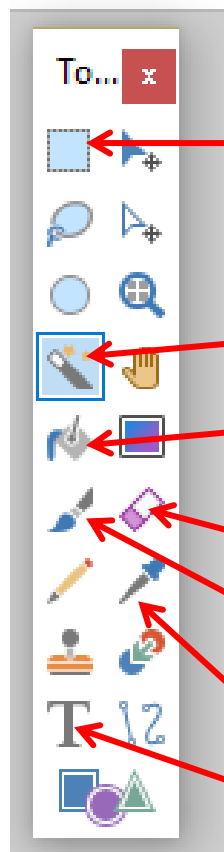
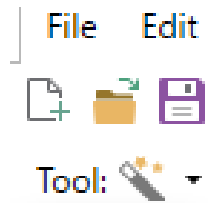


Each area touched by the wand will turn blue, click delete and continue. With the visible background removed it is now transparent, and when the drawing is coloured in it can be pasted on to any background or photograph.

You have two optional active colours at any one time. Left click to paint with number one, right click for number 2. Click the paint pot to fill in an area of your choice, see next page.



See the tool bar below and use the Paint pot to fill in the different areas, experiment with your copies



Cropping tool (see previous How To on Cropping)

Magic Wand to remove the background of a drawing

Paint pot to fill in areas of your drawing.

Eraser

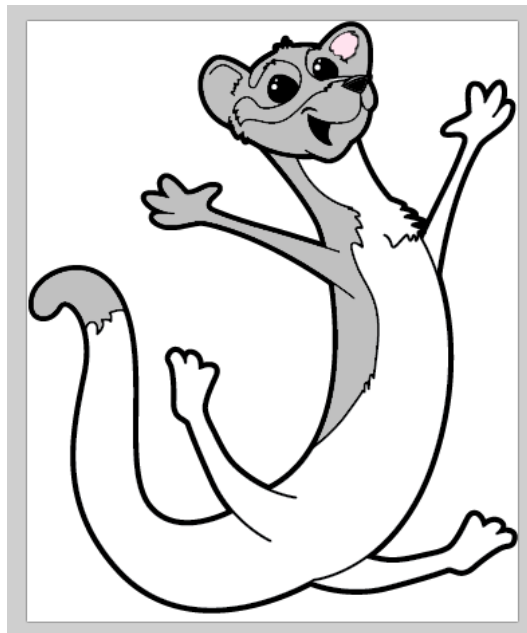
Paint brush to freehand paint

Colour picker to copy a colour from another picture

Text tool to write on a picture



The fill tool was used to colour in the weasel drawings below



Please leave any questions in the comments section of 'How To'.

© Weasle outline drawing courtesy of pre-school.com.